



Tulsa Region ARES

Emergency Communications

2023 Update

Paul H. Teel
ARES Emergency Coordinator
Tulsa County
918-998-8032
WB5ANX@ARRL.NET



Agenda

- Why do we prepare for emergency comms?
- ARES Overview
 - Tulsa Region organization
 - Agencies served & regional communications plan
- FEMA & Incident Command System
- ARES training
- ARES Info and ARES weekly net

**Why do we prepare
for emergency
communications?**





Amateur Radio from the FCC

§ 97.1 Basis and purpose.

The rules and regulations in this part are designed to provide an **amateur radio service** having a fundamental purpose as expressed in the following principles:

(a) Recognition and enhancement of the value of the amateur service to the public as a voluntary noncommercial communication service, particularly with respect to providing **emergency communications.**

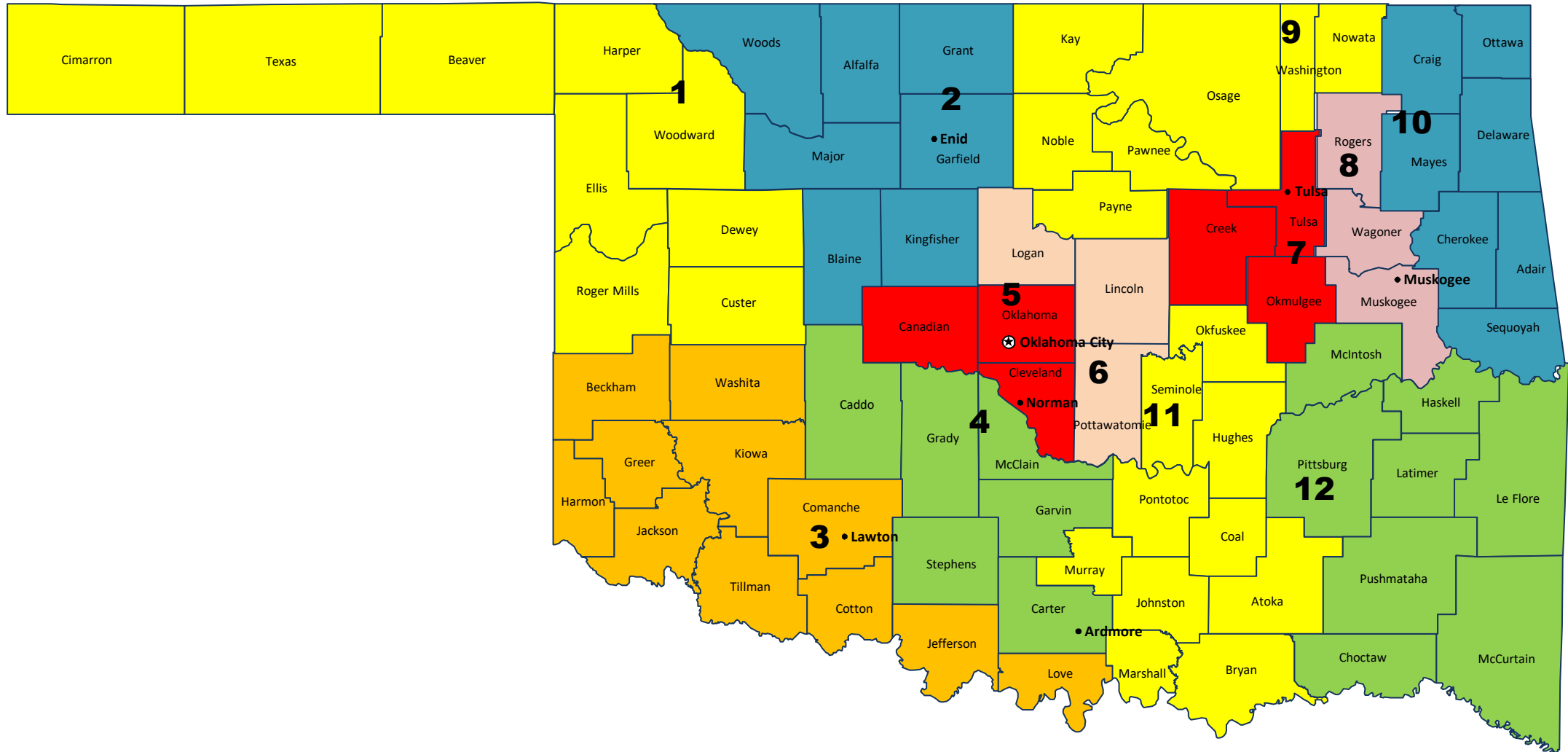


ARES ORGANIZATION

AKA – ALL DISASTERS ARE LOCAL



ARES OK (www.aresok.org)





Tulsa County Served Agencies

- Tulsa Area Emergency Management Agency
- Broken Arrow Emergency Management
- Owasso Emergency Management
- Oklahoma Regional Medical Response System
- Tulsa Health Department
- OK Medical Reserve Corps
- Red Cross*, Tulsa Chapter





Regional Communications Plan

Objectives:

- Frequency coordination for served agencies
- Handle multiple activities simultaneously
- Establish primary and backup frequencies
- Revise & publish as needed



DRAFT - PENDING APPROVAL OF ALL AGENCIES AND REPEATER ORGANIZATIONS INVOLVED

The purpose of this frequency plan is to provide for maximum and coordinated communications between served agencies during a wide spread disaster.
 During a wide spread disaster registered ARES volunteers should **FIRST** check in to the operating resource assignment net.

DO NOT SELF DEPLOY

Agency	Function (* = backup power)	Primary	PL	Secondary	PL	Simplex	Notes
National Weather Service	WX Net - North East Oklahoma *	443.850	88.500			443.850	This is the primary UHF frequency for weather nets
NWC NCO's will advise on frequencies	WX Net - Tulsa Region (South)			146.880	88.500	146.880	This frequency will be used for a Tulsa County only WX net
	WX Net - Tulsa Region (East)			146.880	141.300	146.880	This frequency will be used for a Tulsa County only WX net
	WX Net - Tulsa Region (North)			146.880	82.500	146.880	This frequency will be used for a Tulsa County only WX net
	WX Net - Tulsa Region			146.940	88.500	146.940	This is the primary for damage reports & backup weather nets
	WX Net - Statewide DMR						Talkgroup 31401 (not coordinated by NWS Tulsa)
Tulsa County ARES	Resource Assignments - Primary *	147.390	88.500			147.390	ARES Resources check in here for assignments
	Resource Assignments - Backup			444.950	88.500		Repeater is offline beginning Jan 28, 2022 till relocated
	Resource Assignments - South			444.100	88.500		Backup ARES Resource Assignments - UHF metro sys
	Resource Assignments - North			444.725	88.500		Backup ARES Resource Assignments - UHF metro sys
	Resource Assignments - Simplex					146.550	Backup if regional power source is down
MERC - Hospital Comms	Tulsa County	146.805	88.500				Repeater is offline beginning Jan 28, 2022 till relocated
	Tulsa County - Primary UHF *			443.750	88.500		
	Tulsa County - Primary Simplex VHF					146.535	Primary Simplex Frequency if regional power is down
	Tulsa County - Secondary Simplex UHF					445.025	Secondary Simplex Frequency if regional power is down
American Red Cross	Tulsa County Shelter Comms *	145.110	88.500			145.110	Shelter comms.
Tulsa County Health Dept	Tulsa County	145.170	88.500	147.000			Health Dept comms
Tulsa EOC (WT5EOC)	Tulsa County Damage Reports	146.940	88.500	146.835	103.500	146.940	EOC will also monitor this freq during WX nets
	Statewide Comms	3.900		7.260			HF Nets called by State ARES
	Tulsa Area Emergency Management	146.835	103.500			146.835	TAEMA and ARES Tulsa County comms & coordination
Regional Coordination	Broken Arrow EOC	146.910	88.500				Damage reports for BA only
	Sapulpa	145.430	88.500				
	Bartlesville	146.655	88.500				Covers most of Washington County
	Claremore	147.090	88.500				
	Mounds	146.775					
	Wagoner	443.850	88.500				Uses Tulsa's SuperLink system
	Owasso	146.700	100.000				
	Creek County	145.430	88.500				
	Osage County						
	Washington County	145.150	88.500				On 44 Hill west of Bville.
	Okmulgee County	147.120	88.500				Okmulgee EOC



FEMA INCIDENT COMMAND SYSTEM (ICS)

ARES TRAINING



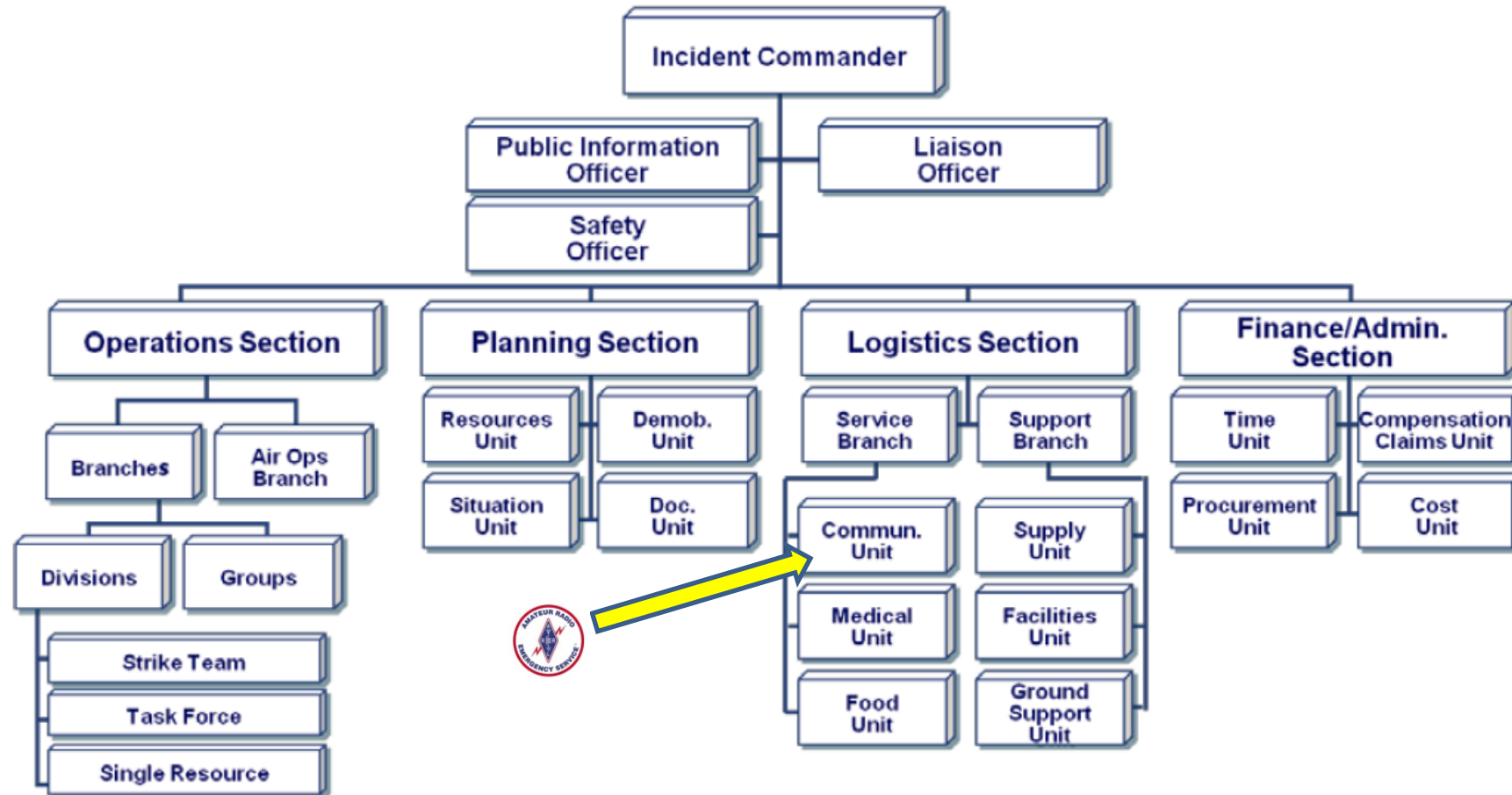
What is Incident Command?

- ICS is a standardized on-scene emergency management system specifically designed to allow users to adopt and integrate an organization structure equal to the complexity and demands of single or multiple incidents, without being hindered by jurisdictional boundaries.



FEMA Incident Command

ICS Organization





ARES Training

- Requirements for volunteers and leaders
 - Level One: entry level, training on ICS 100, 200, 700, 800
 - Level Two: completion of ICS 100, 200, 700, 800, EC-01
 - Level Three: completion of EC-16, ICS:120, 230, 240, 241, 242, 244, 288. Suggested completion of ICS 300 and 400.
 - Track your progress in the ARES Task Book.
- Volunteer with OKMRC
 - www.OKMRC.org



ARES® STANDARDIZED TRAINING PLAN



ARES® EMERGENCY COMMUNICATOR INDIVIDUAL TASK BOOK

Task Book Assigned To:

Name: _____ Call: _____

ARES® Group: _____

Phone Number: _____ Email: _____

Task Book Initiated By:

ARES® Leader's Name: _____ Call: _____

Title: _____ ARES Group: _____

Phone Number: _____ Email: _____

Initiated:

Location: _____ Date: _____

ARES STANDARDIZED TRAINING PLAN TASK BOOK

NAME: _____ CALL: _____ LICENSE CLASS: _____

HOME GROUP: _____ DATE: _____

ARES® TRAINING LEVEL			
Level 2			
This training level builds upon what has been learned in Level 1, and participants in Level 2 may elect to remain at this level based upon the extent of their desired ARES involvement. Much of this training is conducted by the local ARES group to meet its needs and those of their served agency or partners and provides a better understanding of emergency communications. Participants in Level 2 may wish to continue with Level 3 and the potential for leadership roles.			
R = Required, O = Optional, E = Encouraged			
Education			
ICS-100.c - Intro to Incident Command System*	R		
ICS-200.c - ICS for Single Resource*	R		
ICS-700.b - Introduction to National Incident Mgt. System*	R		
ICS-800.c - National Response Framework*	R		
ARRL EC-001 Intro to Emergency Communications	R		
SKYWARN Spotter Basic Training (Biennially)	O		
Comment: *These should be considered as meeting the minimum requirements for deployment at an incident. Local EMA authorities may <u>require</u> additional training.			
Participation			
Net Participation (Once per Quarter)	R		
Public Service Event Participation	O		
Simulated Emergency Test or Exercise Participation (Annually)	O		
Serve as Net Control	O		
Comment:			
Proficiency/Skill			
Program tone into HT	R		
Program frequency & offset into radio	R		
Write and send an ICS-213 message	R		
Operate VHF Digital messaging station	O		
Operate unit specific Digital VHF or HF station	O		
Build a simple dipole antenna**	E		
Build Powerpole adapter cable**	E		
Solder PL259 connector to coax**	E		
Assemble a 24-hour Deployment Kit*	E		
Comment: * The contents of a 24-hour Kit will be specified in either a separate document or as an Annex to this document. ** Skills that are very useful to know and everyone is encouraged to learn.			
Other /Unit Specific			
Comment:			



For More Information

- www.ARESOK.org
- www.ARRL.org/ARES
- Paul Teel: WB5ANX@arrrl.net
- Mark Conklin: N7XYO@arrrl.net
- Mark Klein: N5HZR@arrrl.org
- **Join the ARES net on Thursday Night @ 2000 hrs**
 - 147.390 (weeks 1-3), 443.850 (weeks 4 & 5)



**ANY
QUESTIONS?**

Public Service & Events



Agenda

How you can help your community

What do we do?

What is a SAG?

How do I prepare for an event?

How can I volunteer?

When are the events?

Where do I get more information?

How you
can help
your
community

ARES provides emergency comms

Serve with our skills & technology

Use your ability to communicate

Riders value our presence and help

You may be the only person for miles



What do we do? What is a SAG?

- **SAG = Support And Gear**
- **Trained operators with gear to help the riders**
- **Water, Ice, & Snacks**
- **Minor First Aid**
- **Bike pumps for flats**
- **Rides to the next rest stop**
- **Ride back to start finish**
- **Communicate with the Command Post & Net Control**

How do I prepare?

- Register for the event at W5IAS.com
- Study the maps for all routes
- Get the comms plan (ICS205) to ensure frequencies are programmed
- Safety Vest for side of the road stops
- Assemble a minor first aid kit
- Bike rack, Tire pump, ice chest, towels, paper towels, small tool kit
- Handheld radio for use outside of the vehicle and rest stops
- Bike counter, paper, pen, clipboard
- Attend the SAG briefing via Zoom



W5IAS.com

Register
Here =>

SIGN UP FORM

Call Sign *

Name *

First

Last

Email *

Email

Confirm Email

Mobile Number *

This will be shared with the SAG team and used if radio com's is lost.

Home QTH

This will allow us to try and pair you with a potential Ride along. (major intersections are ok)

Ride Along Only

Yes

If you have never been a SAG before or would like to ride along with a SAG to see what is done, we will try to pair you up with an open driver.

T-Shirt Size *

Last Bike Ride You Worked

Questions/Comments

Please feel free to add any questions or comments you may have that we might need to answer here.

SUBMIT

Upcoming Events for 2023

* = Register at [W5IAS.com/events](https://www.w5ias.com/events)

- **Tour de Tulsa, May 6 ***
- **Copland Classic, May 20 ***
- **Tour de Cure (American Diabetes Assoc), TBD for 2023**
- **Remember Black Wall Street, June 3 ***
- **Tulsa Tough, June 10 & 11 ***
- **Dam JAM, Sept 9 ***
- **Bike MS, Sept 16 & 17 (registration handled by Bville club)**



Where do I get more information?